



Tourism Statistics Summary

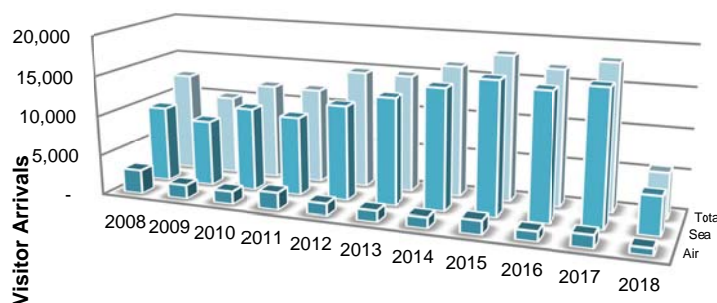
February 2018

Visitors - ↓69.3%
Tourists - ↓58.9%
Excursionists - ↓77.5%

OVERVIEW

February's visitor arrivals for what is considered to be in the winter season for 2018, registered Anguilla's 2nd decline for the year of 69.3%, 5,549 visitors gracing our shores in comparison to the 18,100 in February 2017. This decline could still be attributed to the challenges being experienced after the passage of Hurricane Irma in September 2017, which affected the subsequent months, resulting in arrivals that were lower in comparison to previous year's monthly corresponding figures. The declines continue to be at a slower rate, with increased number of visitor in comparison to each previous months; Sept. (-88.1%, 653 arrivals), Oct. (-90.4%, 833 arrivals) and Nov. (-81.9%, 2,352 arrivals), Dec (-75.8%, 4,232 arrivals) and Jan. (72.5%, 4,984 arrivals). February's total was the lowest recorded number of visitor arrivals to grace our shores during this period dating back to 1993, followed by the 8,205 visitors after the passage of Hurricane Luis in 1995.

Most visitor arrivals (96.0%) to Anguilla during February came with the intentions of vacationing, while 4.0% came with the intention of doing business.



| | 2008 | 2009 | 2010 | 2011 | 2012 | 2013 | 2014 | 2015 | 2016 | 2017 | 2018 |
|---------|--------|--------|--------|--------|--------|--------|--------|--------|--------|--------|-------|
| ■ Air | 2,993 | 1,736 | 1,598 | 2,139 | 1,512 | 1,361 | 1,342 | 1,704 | 1,221 | 1,581 | 873 |
| ■ Sea | 9,556 | 8,298 | 10,431 | 9,863 | 11,841 | 13,341 | 15,011 | 16,401 | 15,641 | 16,511 | 4,676 |
| ■ Total | 12,549 | 10,034 | 12,029 | 12,002 | 14,703 | 14,702 | 16,353 | 18,111 | 16,862 | 18,102 | 5,549 |

Figure : Visitor Arrivals, February 2008 - 2

PASSENGER MOVEMENT

Passenger arrivals (including both residents and visitors) recorded a decline of 76.3%; totalling 5,549 arrivals, down from February's 2017 figure of 23,386 passengers.

Inward passenger movement by sea continued to be the main mode of entry, the seaport accounted for 4,676 (84.3%) arrivals, of which, 3,341 (71.4%) passengers entered at the Blowing Point terminal and 1,335 (28.6%) at the Sandy Ground port. 873 (15.7%) passengers came into Anguilla via the Clayton J. Lloyd International Airport.

Passenger departures recorded a decrease of 74.1% relative to the same period in 2017, with 6,066 outbound passengers, compared to the recorded 23,457 in 2017.

Passenger departures via the seaports from Anguilla accounted for 87.4% (5,301), of which 3,959 (74.7%) passengers left through the Blowing Point terminal and 1,342 (25.3%) passengers made their exit from the Sandy Ground port. The Clayton J. Lloyd International Airport facilitated 12.6% (765) of the departures from Anguilla.

TOURISTS (Stay-Over Visitors)

February's tourist (stay-over) arrivals to Anguilla recorded its second monthly decrease for the year 2018, with a 58.9% decrease over the same period for 2017 with 3,260 arrivals after the decrease in January 2018/17 of 61.4%. This was also the smallest recorded number of tourist arrivals for the month February as far back as 1993, followed by the 3,848 arrivals in 1996, following the passage of Hurricane Luis in September 1995.

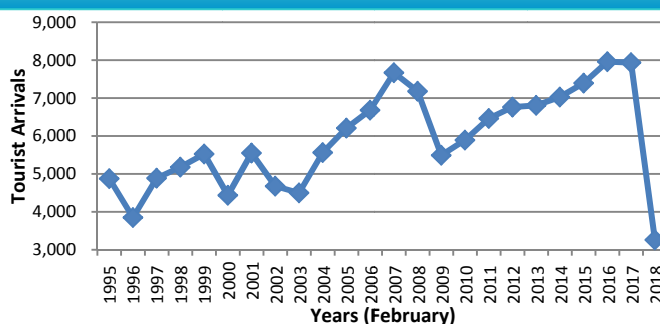


Figure : Tourist Arrivals, February 1995-2018

TOURISTS (Stay- Over Visitors) *continued*

The average intended length of stay of tourists in Anguilla for the period under review increased to 10.1 days compared to 7.7 days in February 2017. Most tourists; 28.7% intended to spend 4-7 days in Anguilla, followed by 25.8% of tourists who planned to stay 8-15 days, 22.7% who scheduled their stay for 1-3 days, 18.6% who scheduled to stay 23 days or more and 4.3% who stated they intended to stay 16-22 days.

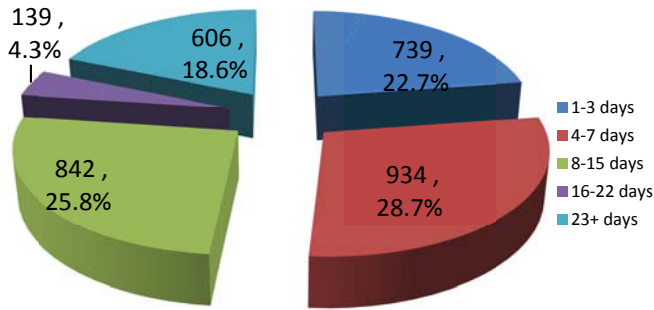


Figure : Tourist Arrivals by Length of Stay, February 2018

A review of the source markets for tourists visiting Anguilla during February 2018 showed that eight out of ten of the source markets contributed to this recorded decrease. The largest decrease were experienced by the ‘Italian’ markets with 86.6%, followed by the ‘Canadian’ (75.8%), ‘USA’ (64.9%), ‘German’ (57.6%), ‘Other European Countries’ (54.0%), ‘Other’ (49.6%), ‘U.K.’ (46.2%), ‘Dutch West Indies’ (27.6%). The two increases were recorded by the ‘Caribbean’ (7.6%), and the ‘French West Indies’ (3.0%) source markets. The USA market; Anguilla’s major source market recorded a share of 61.4% of the tourist market.

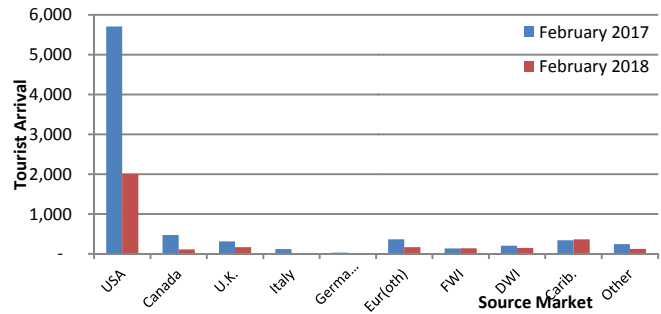


Figure : Tourist Arrivals by Country of Residence, February 2017 and 2018

EXCURSIONISTS (Day Trippers)

Excursionist arrivals for the month under review recorded its second decline for the year 2018 with 77.5%; 2,289 day trippers, down from 10,166 during the same period in February 2017. This is recorded as the lowest number of day-trippers to the island for the month February for which data is available, as far back as 1993, followed by 4,457 arrivals in February 1996, following the passage of hurricane Luis in September 1995.

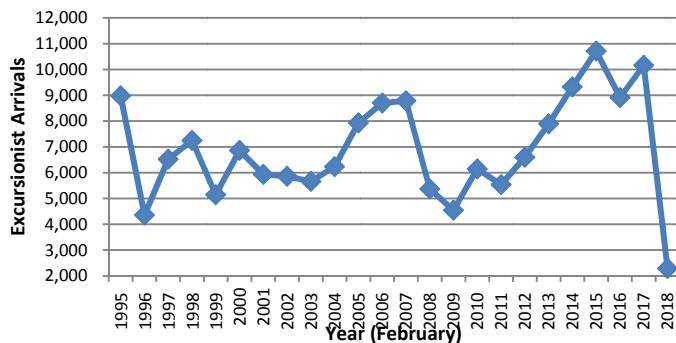


Figure : Excursionist Arrivals, February 1995–2018

Anguilla’s day-trippers source markets showed declines in all markets, contributing to the decrease in excursionist arrivals this month. The largest decrease was recorded by the ‘Canadian’ market with 91.3% followed by the

‘Italian’ Market (87.9%), ‘USA’ (86.5%), ‘Other’ (79.1%), ‘French West Indies’ (68.6%), ‘Other European Countries’ (67.6%), ‘U.K.’ (67.3%), ‘German’ (50.4%), ‘Caribbean’ (47.4%) and ‘Dutch West Indies’ (28.0%) source markets. Anguilla’s main excursionist source market, the USA held the largest share with 28.3%, during this period, however, aggregately; the European Market (Other Europe, Italy, Germany and the U.K.) held a share of 36.2%.

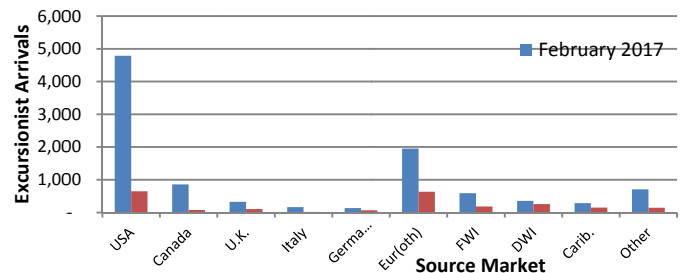


Figure : Excursionist Arrivals by Country of Residence, February 2017 and 2018

Cruise Ship Arrivals

Anguilla recorded eight small vessels that docked in the Sandy Ground port which accommodated 976 passengers and 821 crew members.

This report, along with other Tourism Data, is available at the Government of Anguilla Statistics Department’s website: <http://gov.ai/statistics/tourism.htm>

ANGUILLA STATISTICS DEPARTMENT
P.O.BOX 60 | THE VALLEY | ANGUILLA
BRITISH WEST INDIES

Telephone: +(264) 497-5731 | Fax: +(264) 497-3986

Email: statistics@gov.ai

‘Sound Statistics for Sustainable Development’